



GAT MONTHLY MEMBERSHIP PROGRESS REPORT

Results as of: 10/31/2023

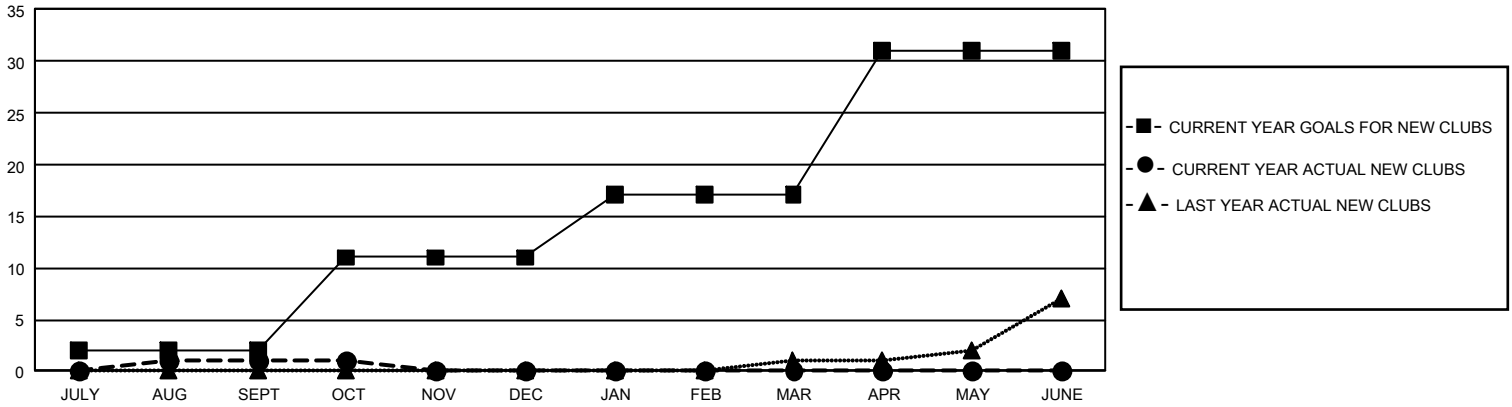
GMT Constitutional Area 1, Group C

REPORT DOES NOT INCLUDE CLUBS IN UNDISTRICTED AREAS.

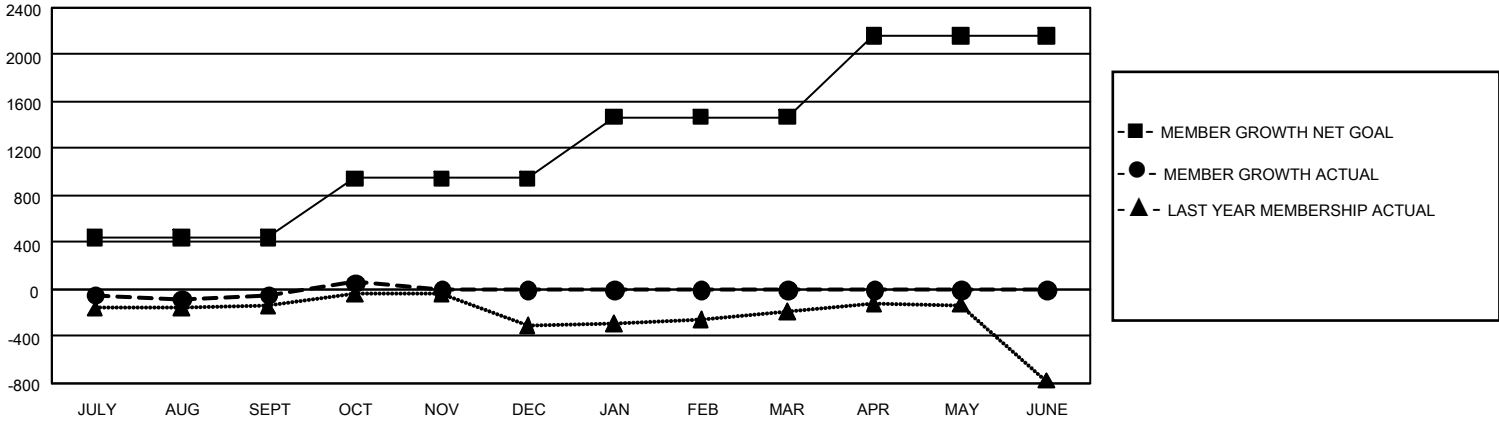
Clubs			
RESULTS FOR 2023-2024			
QUARTER	NEW CLUB GOAL	NEW CLUBS	DROPPED CLUBS
JULY/AUG/SEPT	6	1	4
OCT/NOV/DEC	27	0	0
JAN/FEB/MAR	18	0	0
APR/MAY/JUNE	42	0	0

Members			
RESULTS FOR 2023-2024			
QUARTER	MEMBER GROWTH NET GOAL	MEMBER GROWTH ACTUAL	DROPPED MEMBERS ACTUAL (including transfers)
JULY/AUG/SEPT	437	1,033	987
OCT/NOV/DEC	506	395	270
JAN/FEB/MAR	525	0	0
APR/MAY/JUNE	693	0	0

GOALS AND ACTUAL NEW CLUBS CUMULATIVE



GOALS AND ACTUAL MEMBERS CUMULATIVE



DROPPED CLUBS: 4	559 CLUBS OF 1,400 ADDED 1 OR MORE NEW MEMBERS	GENDER DISTRIBUTION	
		MALE 29,535 (69.02%) FEMALE 13,238 (30.93%) NON BINARY 3 (0.01%) PREFER NOT TO ANSWER 17 (0.04%)	
DROPPED MEMBERS		TOTAL FAMILY UNIT MEMBERS 8,878	
DECEASED 199 CLUB CANCELLED 0 OTHER 1,065 TOTAL 1,264	CLICK HERE FOR CUMULATIVE MEMBERSHIP DATA	FAMILY MEMBERS PAYING HALF DUES 4,508	